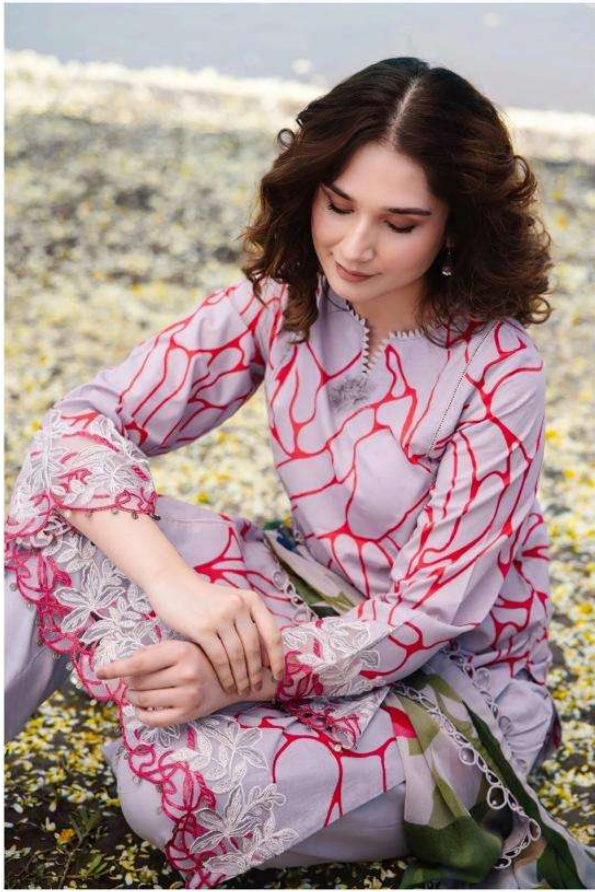


A woman with her hair in a ponytail, wearing a black dress with white abstract patterns and a colorful scarf, is looking down at a bar. The bar has several bottles with different colored caps (yellow, green, blue). The background is a blurred outdoor setting.

Alzohaib

M.BASIC







AZ.1021 AZ.1022



Alzohaib
M.BASIC



Alzohaib

M.BASIC

AZ-1021

TOP
PURE COTTON PRINT WITH
EXCLUSIVE PATCHES
EMBROIDERY (2 patches)

BOTTOM
SARI LASHI
DUPATA
COTTONCHIFFON

SIZE INFORMATION:
M: 36-38
L: 38-40
XL: 40-42



Alzohab

M.BASIC

AZ-1022

TOP
PURE COTTON PRINT WITH
EXCLUSIVE FINISHES
EMBROIDERY (2 Pieces)

BOTTOM
SEMI LAIN
DUPATTA
COTTON/CHIFFON

USE MEASUREMENTS