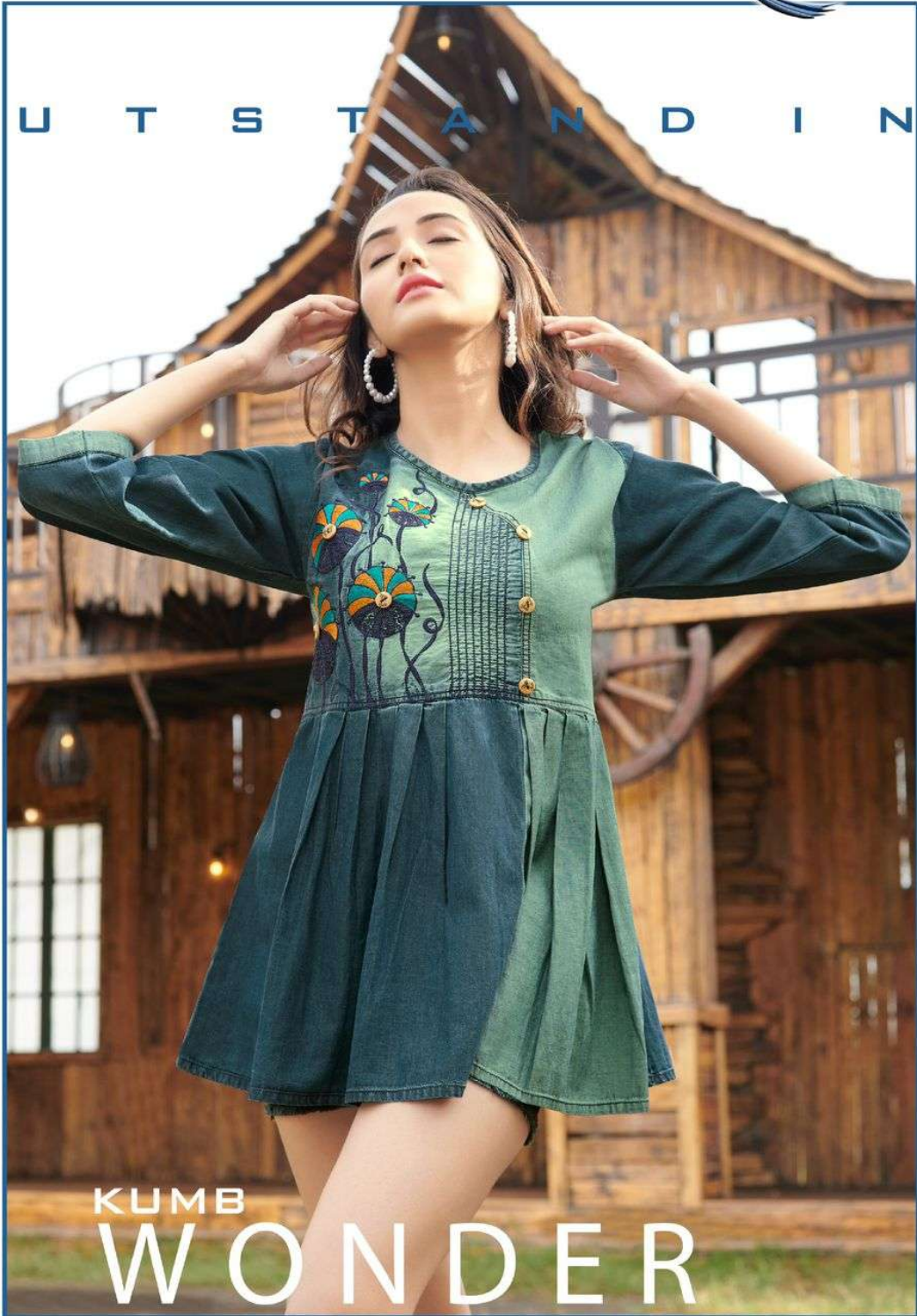




O U T S T A N D I N G



KUMB  
WONDER





DESIGN-1062



DESIGN-1063



DESIGN-1064



DESIGN-1065





V  
E  
C  
T  
O  
R







DESIGN-1058



DESIGN-1059



DESIGN-1060



DESIGN-1061





KUMB  
WONDER









Seriema



DESIGN  
1062



A woman with long dark hair, wearing a blue denim dress with a decorative eye embroidery on the chest, white sneakers, and large hoop earrings. She is standing in a rustic wooden building, leaning against a wooden post and touching a light bulb. The building has a wooden floor and walls, with a window and another light bulb visible.

*Seriema*

B O N Z O V I

DESIGN  
1060









*Seriema*

VECTOR



The logo for 'Seriema' features a stylized blue bird or wing icon above the brand name in a cursive font.

Seriema®



DESIGN  
1063





C O M M A N D







*Seriema*

DESIGN  
1061

I M P A C T





*Seriena*



C A P T U R E





I M P A C T





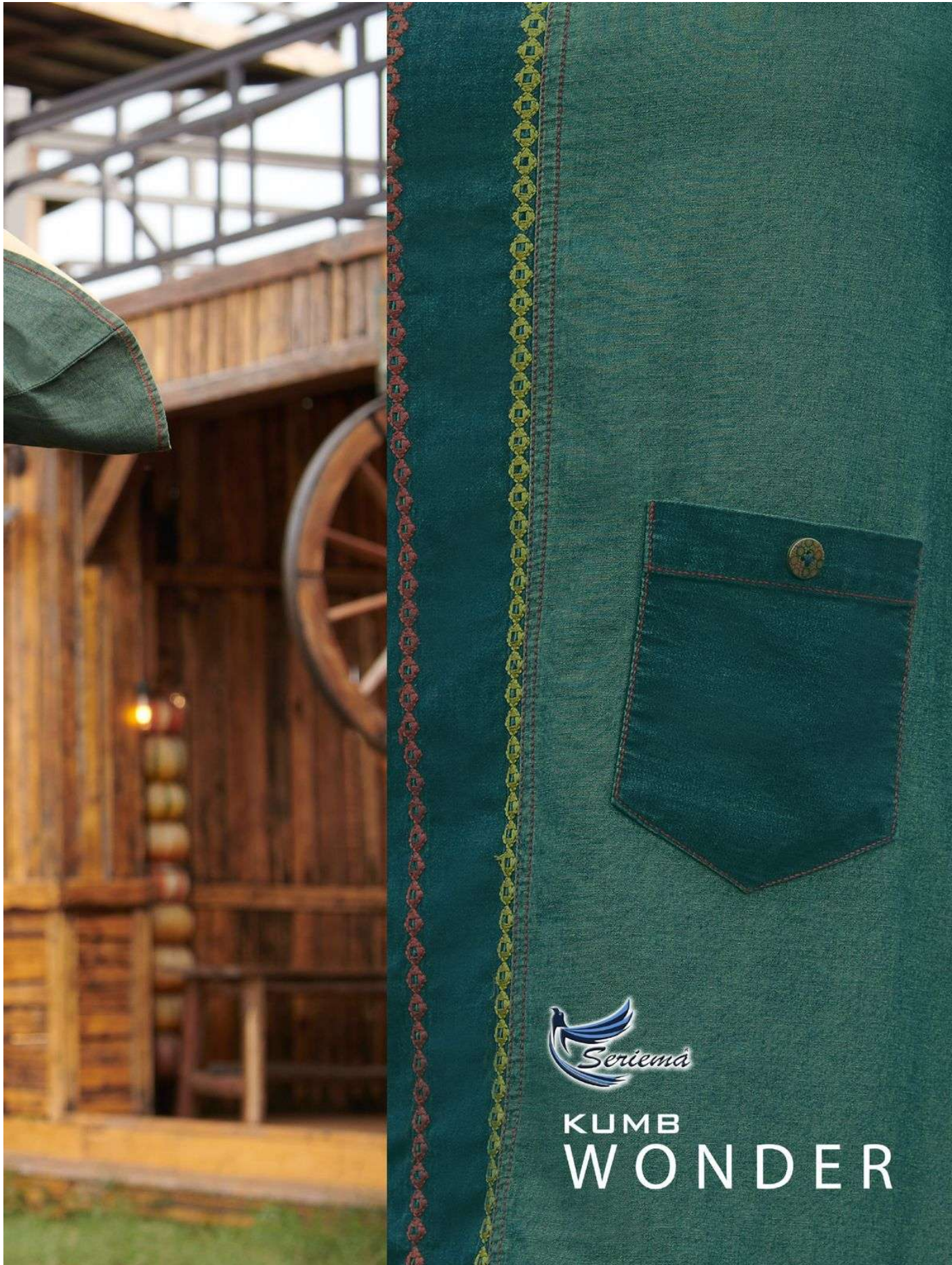
A woman with long, wavy brown hair is standing in front of a rustic wooden barn. She is wearing a green, long-sleeved, knee-length dress with a decorative floral pattern on the chest and a buttoned placket. She is also wearing white sneakers with black and white checkered patterns. The barn behind her has a wooden balcony with a railing, a sign that says "BAR", and a large wooden wheel. The scene is set outdoors on a grassy area.

*Seriemá*

C A P T U R E

DESIGN  
1059





KUMB  
WONDER





Seriema

I M P R A T I O N

DESIGN  
1058



*Seriema*



B O N Z O V I





I M P R A T I O N

