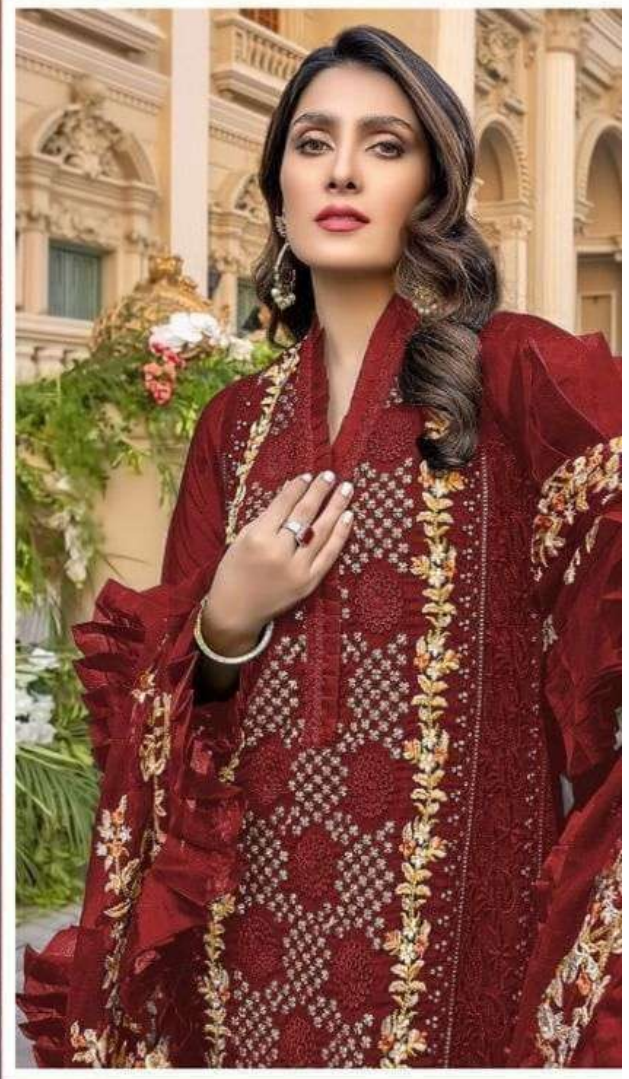


pushp
CREATION
D.NO.:1023 B



FABRIC DETAILS
TOP. GEORGETTE WITH EMBROIDERY
DUPATTA. NAZMIN WITH FRILL
INNER. SANTOON
BOTTOM. SANTOON

Ⓟ DRY CLEAN ONLY.
✗ DO NOT USE ANY BLEACH OR STAIN REMOVING CHEMICAL.
☎ IRON THE FABRIC AT MODERATE TEMPERATURE.



pushp
CREATION

D.NO.:1010 C



TOP:- FOX GEORGATTE
DUPATTA:- NET
BOTTOM / INNER:- SANTOON

- Ⓟ DRY CLEAN ONLY.
- ✗ DO NOT USE ANY BLEACH OR STAIN REMOVING CHEMICAL
- ☐ IRON THE FABRIC AT MODERATE TEMPERATURE.



pushp
CREATION

D.NO.:1010 D



TOP:- FOX GEORGATTE

DUPATTA:- NET

BOTTOM / INNER:- SANTOON

Ⓟ DRY CLEAN ONLY.

✕ DO NOT USE ANY BLEACH OR STAIN REMOVING CHEMICAL

☐ IRON THE FABRIC AT MODERATE TEMPERATURE.



pushp
CREATION

D.NO.:1010 A



TOP:- FOX GEORGATTE
DUPATTA:- NET
BOTTOM / INNER:- SANTOON

- Ⓟ DRY CLEAN ONLY.
- ✗ DO NOT USE ANY BLEACH OR STAIN REMOVING CHEMICAL
- ☐ IRON THE FABRIC AT MODERATE TEMPERATURE.



D.NO.:1010 A



D.NO.:1010 B



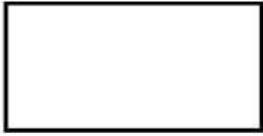
D.NO.:1010 C



D.NO.:1010 D



TOP :- FOX GEORGATTE
DUPATTA:- BUTTERFLY NET
BOTTOM/ INNER:- SANTOON



pushp
CREATION

D.NO.:1010 B



TOP:- FOX GEORGATTE
DUPATTA:- NET
BOTTOM / INNER:- SANTOON

- Ⓟ DRY CLEAN ONLY.
- ✗ DO NOT USE ANY BLEACH OR STAIN REMOVING CHEMICAL
- ☐ IRON THE FABRIC AT MODERATE TEMPERATURE.



pushp
CREATION
D.NO.:1023 A



FABRIC DETAILS
TOP. GEORGETTE WITH EMBROIDERY
DUPATTA. NAZMIN WITH FRILL
INNER. SANTOON
BOTTOM. SANTOON

- Ⓟ DRY CLEAN ONLY.
- ✗ DO NOT USE ANY BLEACH OR STAIN REMOVING CHEMICAL.
- ☎ IRON THE FABRIC AT MODERATE TEMPERATURE.



pushp
CREATION
D.NO.:1023 B



FABRIC DETAILS
TOP. GEORGETTE WITH EMBROIDERY
DUPATTA. NAZMIN WITH FRILL
INNER. SANTOON
BOTTOM. SANTOON

Ⓟ DRY CLEAN ONLY.
✗ DO NOT USE ANY BLEACH OR STAIN REMOVING CHEMICAL.
☎ IRON THE FABRIC AT MODERATE TEMPERATURE.



pushp
CREATION
D.NO.:1023 C



FABRIC DETAILS
TOP. GEORGETTE WITH EMBROIDERY
DUPATTA. NAZMIN WITH FRILL
INNER. SANTOON
BOTTOM. SANTOON

Ⓟ DRY CLEAN ONLY.
✗ DO NOT USE ANY BLEACH OR STAIN REMOVING CHEMICAL.
☎ IRON THE FABRIC AT MODERATE TEMPERATURE.



pushp
CREATION

D.NO.:1023 D



FABRIC DETAILS
TOP. GEORGETTE WITH EMBROIDERY
DUPATTA. NAZMIN WITH FRILL
INNER. SANTOON
BOTTOM. SANTOON

- Ⓟ DRY CLEAN ONLY.
- ✗ DO NOT USE ANY BLEACH OR STAIN REMOVING CHEMICAL.
- ☐ IRON THE FABRIC AT MODERATE TEMPERATURE.